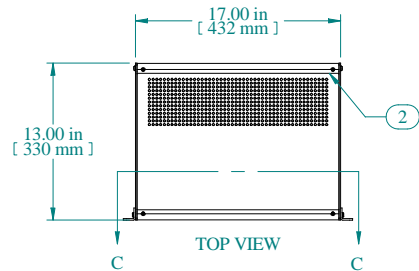
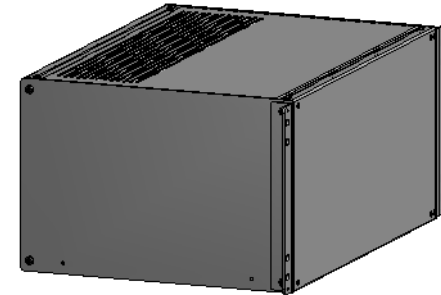


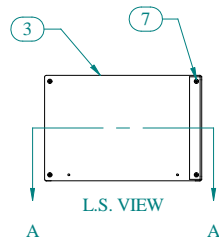
SECTION A-A



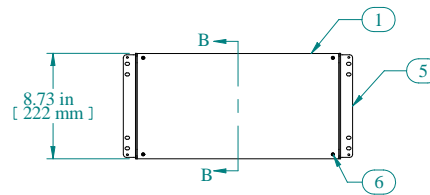
SECTION C-C



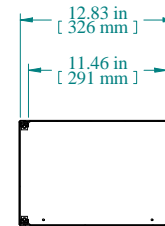
TOP VIEW



L.S. VIEW



FRONT VIEW



SECTION B-B

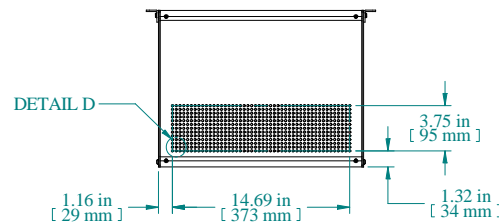
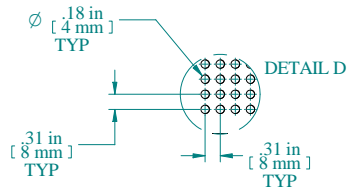
Item Number	Title	Quantity
1	RMC - FRONT/REAR PANEL	2
2	RMC - VENTED TOP/BOTTOM PANEL	2
3	RMC - SIDE PANEL	2
4	RMC - INTERNAL BRACKET	4
5	RMCS/V - RACK MTG. BRKT.	2
6	SCREW 6-32 X 3/8"	16
7	SCREW 10-32 X 5/8"	8

**PART NUMBERS**

RMCV190813BK1 | PAINTED BLACK TEXTURED

**NOTES**

Shipped knockdown for handling ease & protection.



BOTTOM VIEW

Data subject to change without notice. Isometric drawing not to scale.



**HAMMOND  
MANUFACTURING™**

www.hammondmfg.com

PART NO. RMCV190813